



# INSTRUCTION BULLETIN

No. 340736

Machine: 800/810/8410 LP

Published: 06-2004

Rev. 00

**NOTE: DO NOT DISCARD the Parts List from the Instruction Bulletin. Place the Parts List in the appropriate place in the machine manual for future reference. Retaining the Parts List will make it easier to reorder individual parts and will save the cost of ordering an entire kit.**

*NOTE: Numbers in parenthesis ( ) are reference numbers for parts listed in Bill of Materials.*

Installation instructions for **kit number 9000823**

## **SYNOPSIS / PROBLEM:**

This kit contains parts needed to install/replace the ECU controller on 800/810 LPG model sweepers with serial numbers between 004937 and 005999 and 8410 LPG model sweepers with serial numbers between 013228 and 013999 (with Zeems fuel systems).  
Please follow step-by-step instructions.

## **SPECIAL TOOLS / CONSIDERATIONS: NONE**

(Estimated time to complete: 1 hour)

---

## **PREPARATION:**

1. Park the machine on a clean level surface.

**FOR SAFETY: Before leaving or servicing machine, stop on level surface, turn off machine, and remove key.**

2. Open and lock engine compartment doors.
3. Disconnect the battery cables from the machine.



**WARNING: Always disconnect the battery cables from the machine before working on electrical components.**

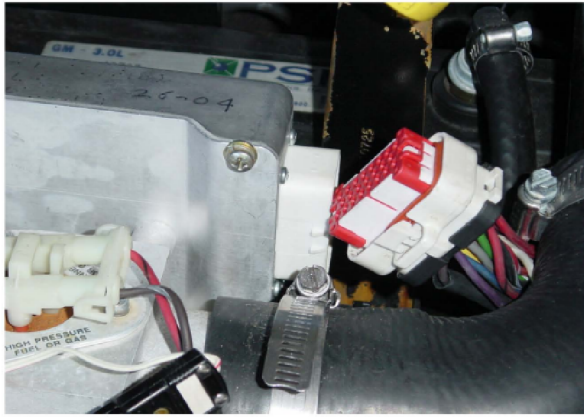


FIG. 1

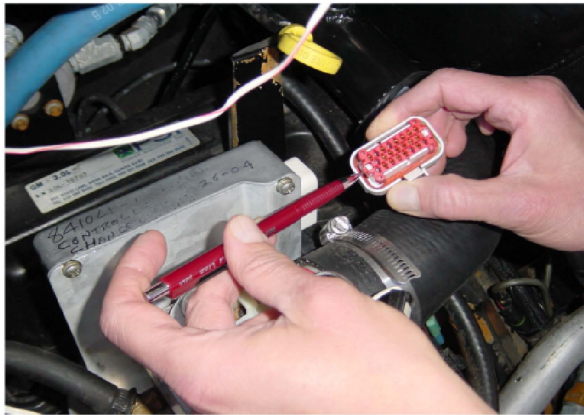


FIG. 2

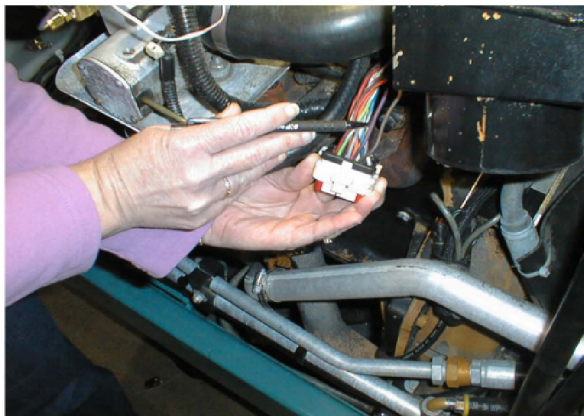


FIG. 3

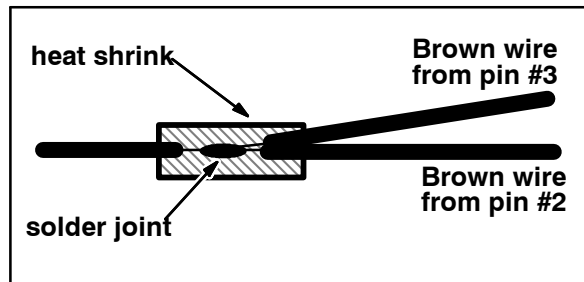


FIG. 4

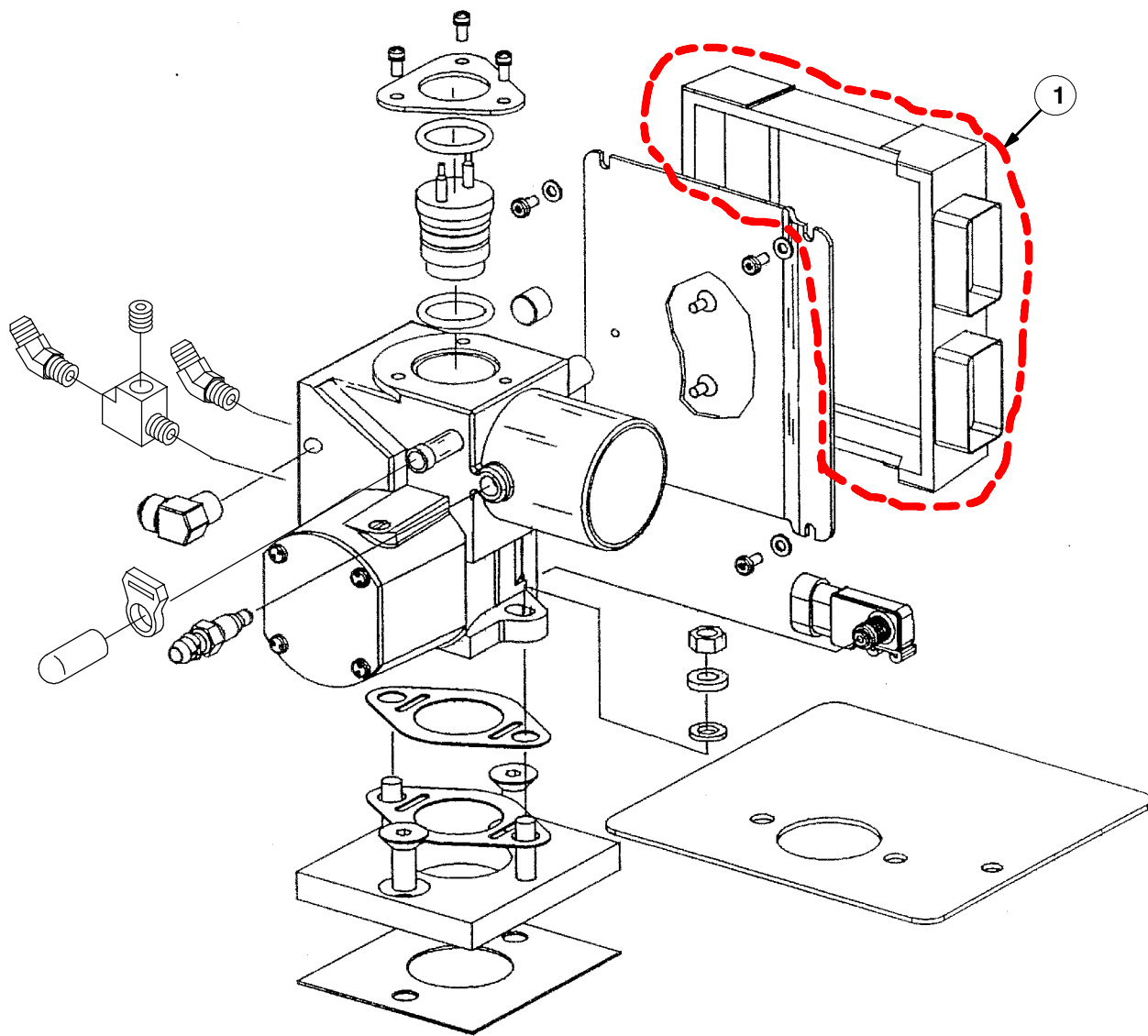
*NOTE: The ECU reprograms itself when the engine is first started after rewiring. Allow approximately 1-2 minutes for the engine to settle down. The machine is then ready for use.*

## ECU Wiring Procedure:

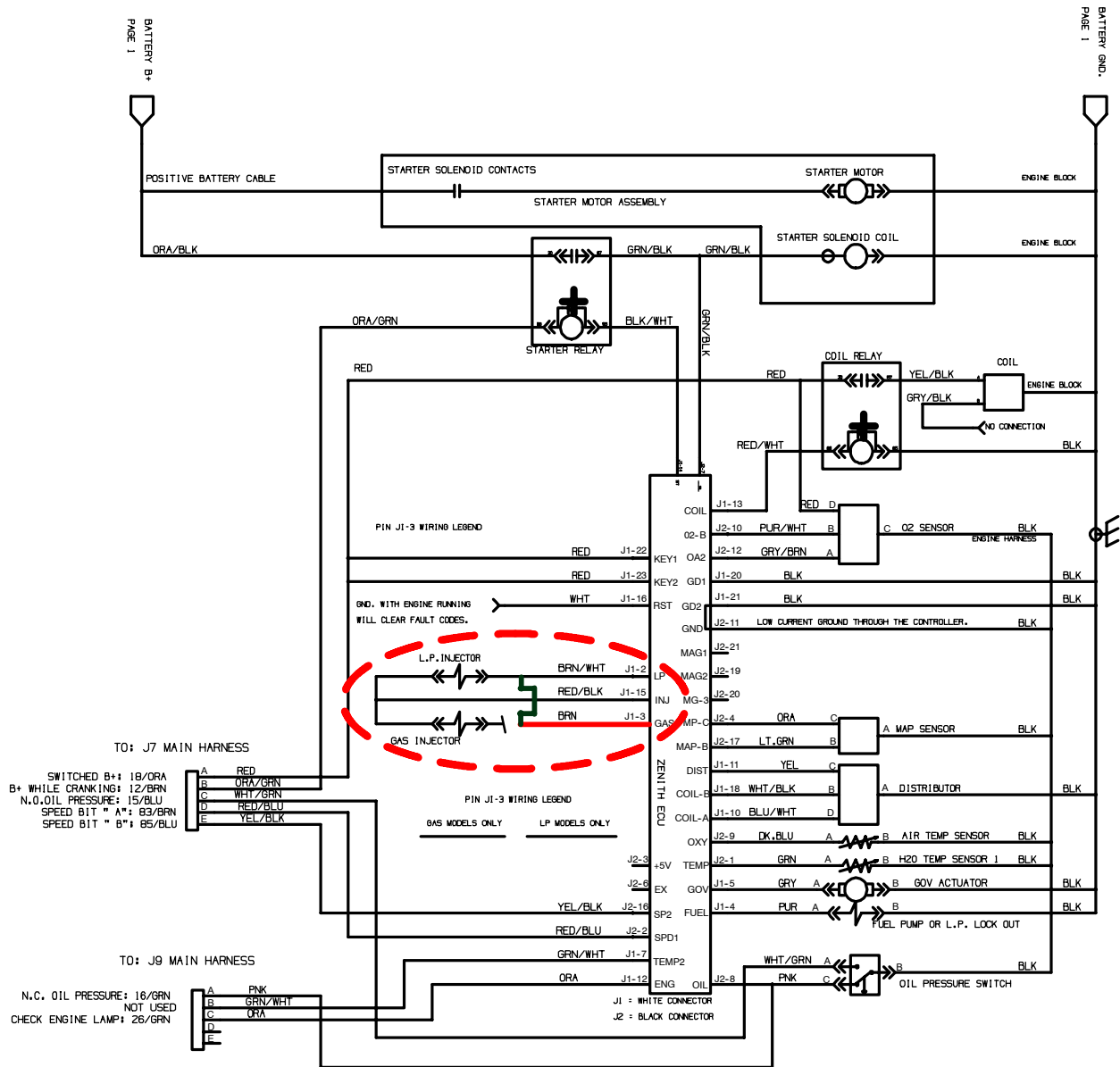
*NOTE: Refer to schematic on the following page for additional wiring information.*

1. Disconnect the white connector from the ECU. Refer to Fig. 1.
2. Release, but do not remove, the red locking cover from the white connector to dislodge the connection. Refer to Fig. 2.
3. Cut the brown wire in **pin #3** approximately 2" above the connector.
4. Strip a small portion of insulation from the loose end of the brown wire still in **pin #3**.
5. Measure and mark a point 1 1/2" from the connector end of the brown wire in **pin #2**. Refer to Fig. 3.
6. Strip 3/4" of insulation from the marked area of the brown wire in **pin #2**.
7. Pull and twist the brown wire in **pin #2** from the connector.
8. Slide heat shrink onto the brown wire from **pin #2**.
9. Solder the loose end of the brown wire in **pin #3** to the brown wire in **pin #2**. Solder wires as shown in Fig. 4 so heat shrink can be positioned over the solder joint for the best possible seal.
10. Heat shrink the heat shrink over the solder joint and the exposed portions of both brown wires. Refer to Fig. 4.
11. Push the brown wire removed from the connector back into **pin #2**. Ensure brown wire is locked into place.
12. Ensure other wires are secure in the connector.
13. Lock the red locking cover back into place.
14. Reinstall (snap back) red cover back into place.
15. Ensure the red seal is properly positioned inside the white connector.
16. Tape the unused brown wire from the harness against the harness. This wire is not used.
17. Plug the white connector into the ECU. The connector should easily plug into the ECU. Do not force the connector into the ECU. Refer to Fig. 1.

**NOTE: Refer to ECU Wiring Procedure for steps required to rewire the modified controller (ECU). Rewiring must be completed according to the ECU Wiring instructions. Remove the old controller and install the new controller (1) as shown in the diagram below.**



**NOTE: Refer to the ECU Wiring Procedure for steps required to rewire the modified controller (ECU). Rewiring must be completed according to these instructions.**



### Bill of Materials for Kit, Replmt, Controller (9000823)

Ref.	Tennant Part No.	Description	Qty.
▽	9000823	Kit, Replmt, Controller	
▲	1 1017182	Controlbox, Fuel, LPG [3.0L GM 8410/800]	1

TENNANT COMPANY  
P. O. Box 1452  
Minneapolis, MN 55440-1452